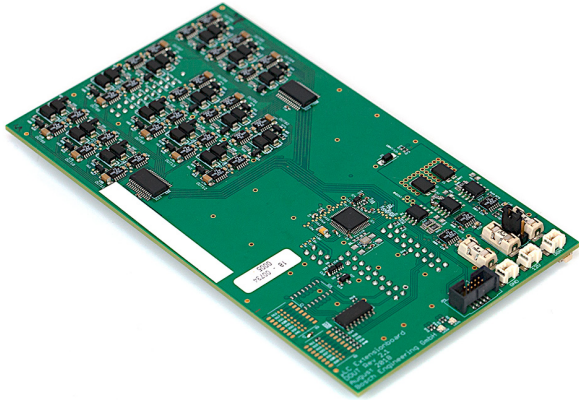


# Expansion Board Digital Outputs



- ▶ 14 additional digital outputs included
- ▶ Short circuit proof
- ▶ Change to individual states possible: Low, High, High-Z

The **Expansion Board Digital Outputs** extends the functions of the **μLC Test System** without intervening the software and without activating additional mechanisms. Digital Outputs provides 14 digital outputs, which can be switched individually to the states **Low**, **High** or **High-Z**. All outputs can be switched simultaneously.

## Application

Output voltage	Min	Max
μLC 3.1	-1 V	24 V

## Technical Specifications

### DC characteristics

Parameters	Conditions	Value
$U_{out}$	Output = Low	<1.1 V
$U_{in}-U_{out}$	Output = High	<1.8 V
$R_{out}$	Output = High-Z	>10 MOhm
$I_{out}^* prot$	Channel shutdown threshold	±1 A
$\sum I_{out}^* prot$	Shutdown threshold total current all outputs	±3.33 A

### Timing measured at $U_{in} = 24 V$

Parameters	Conditions	Value
$t_{rise}$	Load of 500 Ohm to GND	58 μs
	Load of 500 Ohm to 24 V	0.3 μs
	Without load	62 μs
$t_{fall}$	Load of 500 Ohm to GND	0.8 μs
	Load of 500 Ohm to 24 V	5.5 μs
	Without load	12 μs
$t_{restart}^*$		33.6 ms

\*: Restart time after overcurrent

## Legal Restrictions

The sale of this product in Mexico is prohibited. Due to embargo restrictions, sale of this product in Russia, Belarus, Iran, Syria, and North Korea is prohibited.

## Ordering Information

**Expansion Board Digital Outputs**  
Order number **F02U.V02.904-01**

### Represented by:

**Europe:**  
Bosch Engineering GmbH  
Motorsport  
Robert-Bosch-Allee 1  
74232 Abstatt  
Germany  
Tel.: +49 7062 911 9101  
Fax: +49 7062 911 79104  
motorsport@bosch.com  
www.bosch-motorsport.de

**North America:**  
Bosch Engineering North America  
Motorsport  
38000 Hills Tech Drive  
Farmington Hills, MI 48331-3417  
United States of America  
Tel.: +1 248 876 2977  
Fax: +1 248 876 7373  
motorsport@bosch.com  
www.bosch-motorsport.com

**Asia-Pacific:**  
Bosch Engineering Japan K.K.  
Motorsports Department  
1-9-32 Nakagawa Chuo, Tsuzuki-ku  
Yokohama City  
Kanagawa Prefecture 224-8601  
Japan  
Tel.: +81 45 605 3032  
Fax: +81 45 605 3059  
www.bosch-motorsport.jp

**Australia, New Zealand and South Africa:**  
Robert Bosch Pty. Ltd  
Motorsport  
1555 Centre Road  
Clayton, Victoria, 3168  
Australia  
Tel.: +61 (3) 9541 3901  
motor.sport@au.bosch.com